

The economic case for the A14 scheme

up to £1.5bn
government investment

construction and upgrades
to 21 miles of road

In 2014, **71,000** vehicles used A14 between Swavesey and Bar Hill every day.

Forecast to rise to **86,000** by 2020.

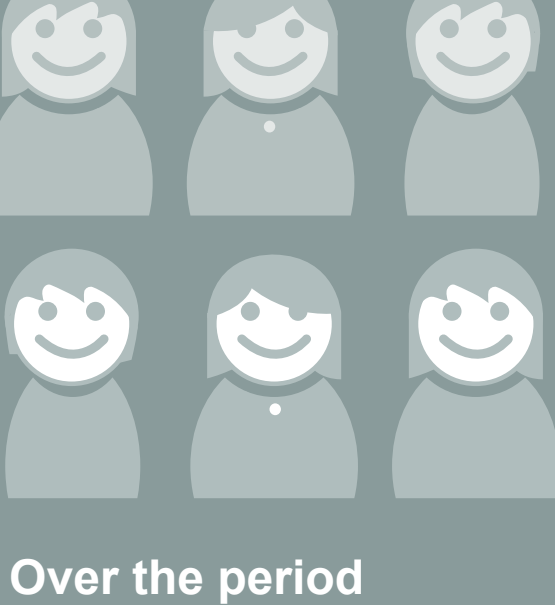
26% of this comprises HGVs – against the national average of 10%

Predicted HGV growth on some sections of the A14 could be as high as **13% by 2020 and 41% by 2035**

70% of the 4 million standard containers handled by Felixstowe Port per year travel onward by road. Of this, 2.02 million containers travel on the existing A14.*

In 2014, this resulted in 1.8 million vehicle movements out from the port.*

Population increase



Over the period between 2011 and 2031 Cambridgeshire's economic assessment forecasts a population increase of 24% for the county of Cambridgeshire.

Cambridgeshire's employment is forecast to grow by 16% between 2012 and 2031

Estimated workforce during peak A14 construction - 1800 people

WORK

Alconbury Weald Enterprise Campus has the potential to create up to **8000 jobs**

The value of reduced travel times, improved access and reduced vehicle operating costs is forecast to be **£1,039.4 million**